


SiteTracker

Roll-Out Management



The complete project
and rollout management
software

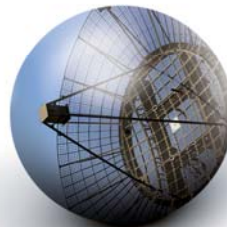
- + Status monitoring
- + Site management
- + Scheduling
- + Incident and fault management
- + Material and system management



Telecommunications
Telecommunications structures



IT
Development of IT infrastructure,
software and hardware rollouts



Security
Border security system rollouts



Wind energy
Setting up wind farms

SiteTracker

is the perfect tool for projects...

[Take the complexity out of rollouts]

- + See status overviews of all sites, individual sites or a group of sites at the push of a button.
- + Immediately identify problems and delays in the „concise view“:
See the project status at a glance in relation to the schedule as coloured progress bars (see figure on the right).
- + Specify schedule templates once and assign them to several thousand sites at the click of your mouse.
- + No need for time-consuming site schedule corrections because template changes are applied automatically.
- + Enter delays as „incidents“ to correct the site schedule and the entire rollout schedule.
- + Entering „incidents“ and providing a reason, duration and initiator, means that schedule changes can be tracked at all times.

[Freely-definable templates and structures]

- + Configure the software yourself to suit your needs instead of paying for costly customising by the manufacturer.
- + Plan each site individually: Define all data fields for status overviews, schedules and information templates yourself.
- + Freely choose how much data you want to enter, and how you want to arrange it, name it or group it.
- + Set up project-specific planning structures.
- + Set up any search functions.
- + Extend and adapt structures during the course of the project on the basis of new information.

[Your benefits at a glance]



Same information status for all involved

Using freely definable information templates, you can collect and maintain any site data in the central database. You are entirely free to choose how much data you want to enter, how you want to arrange it, group it or name it.



Data exchange in one language

SiteTracker supports a wide range of import and export functions in Excel format. Reporting Services enable you to implement any reporting requirements.



Status monitoring at a glance

Freely definable status overviews are available to you as project manager at all levels of the project structure. You see the current progress of any parts of the project at a glance based on activities and milestones.



Identify problems before they occur

You can record all site-specific negative events throughout the project as trouble tickets. Incidents may also change the schedule, enabling you to identify problems immediately and take corrective action as early as possible.



Visualise sites on maps

Display sites with geographical references clearly on maps with status values. Therefore SiteTracker supports standard geographical formats as well as external sources, such as Google Maps and Bing Maps.



Schedule dates and activities clearly

Devise your own schedule templates to suit your requirements. You can use the templates at any sites. Any changes made to the templates also affect the schedules at the sites, if required. Of course, any site-specific planning will not be affected.



Configuration management included

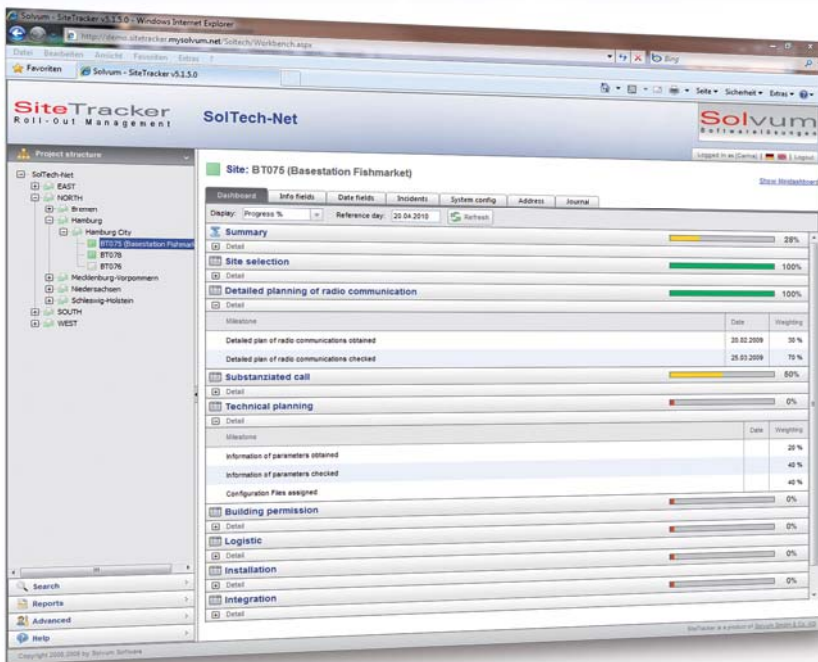
Plan and track the entire equipment configuration and the installations within the system configuration. Keep a close eye on the progress of the construction in aggregate overviews. The database is made up of the parts catalogue and the modules and system administration.



Global cooperation

SiteTracker is 100% Web-based. Users can be involved in projects wherever they live. It does not matter whether they work from the office or away from the office during site construction.

that typically involve the repetition of the same or similar activities at many different sites.



[Clear overview]

+ **SiteTracker** can generate an accurate status report at any (life cycle) stage of a site at any time.

Repetition of identical or the same activities

When activities are repeated over and over, scheduling becomes extremely complex. It becomes difficult to manage successfully and, above all, too complex to manage using classic project management applications. This is where **SiteTracker's** strengths lie: it can control and monitor the same or similar activities at many different sites simply and easily. In addition, **SiteTracker** takes into account any incidents that affect scheduling.

Flexible structures

SiteTracker allows you to implement planning structures that match the exact requirements generally needed in the particular field. Navigating within the project structure is as easy as working with Microsoft Windows Explorer on your computer.

Uninterrupted monitoring

The generic concept of **SiteTracker** allows you to map all activities within a project. The activities are grouped in service programs. A service program is a logical bundle of information and schedule fields. You are free to

configure these fields as required in terms of the amount and type of data you enter, how you name it and group it. **SiteTracker** thus allows constant and uninterrupted monitoring of all incidents and problems during the life cycle of a site.

[Case samples]

- + Setting up IT infrastructure, software and hardware rollouts
- + Setting up communications systems
- + Setting up border control stations
- + Setting up wind farms

Customise project structures

You can change the implemented structures even after a project has started. You can customise service programs to suit individual requirements at any time even over the course of the project. In this way, **SiteTracker** grows together with its projects.


Identify problems at an early stage

Besides pure data recording, **SiteTracker** offers complete monitoring of the rollout process. This is possible if you involve subcontractors in data maintenance via the Internet. The database is thus always up-to-date, allowing you to precisely monitor the progress and identify problems at an early stage.


SiteTracker can generate an accurate status report at any time at any (life cycle) stage of a site. The integrated fault report system guarantees the continued support of all sites even once they become operational.

Role-based privilege assignment

SiteTracker's authorisation concept is role-based. Each role (or even each user) can be assigned different authorisations or views within the system and/or the reports. As a result, project employees have access to different data within the system and thus the level of information between the users also varies. This ensures that you can control project information according to specific target groups.



Overview of features and functions of SiteTracker



Schedules

- + Compatibility with MS Project
- + Site-related schedules
- + Actual plan, baseline, forecast
- + Activities and milestones

Free database structures

- + Any project structure hierarchy (planning centers around sites)
- + Flexible data templates for collecting any relevant information (service programs)

Incidents

- + Record faults related to sites and projects centrally
- + Optional: Impact on the schedule
- + Highlight affected milestones
- + Categorise according to severity and person responsible
- + Fault statistics
- + Enter solutions

Map

- + Visualise sites on map
- + Show project progress
- + Click to show detailed site data
- + Individual site symbols

System configuration

- + Installed parts, record equipment centrally
- + Target/Actual comparison
- + Central parts catalogue with versioning (parts, modules, systems)
- + Parts exchange (update)
- + Exchange of parts across sites and subprojects (cannibalisation)
- + Installation phases
- + Statistics
- + Modules/Systems
- + Link tasks and parts for a clear device set-up

Task management

- + Describe tasks in detail and create precise lists
- + Schedule tasks down to the last minute
- + Assign tasks to employees or teams (for example, by e-mail)
- + Plan resources based on allocation of tasks
- + Activities can be broken down into tasks
- + Automated notifications (e.g. by e-mail) as soon as tasks or problem messages are added or their contents changed
- + Entry in the e-mail distribution list for project members optional

Status overview /

Key performance indicators

- + Progress display based on schedules (configurable)
- + KPI (dates, faults, system configuration, and much more)

Reporting

- + Package includes various standard reports
- + Report wizard for project-specific tabular reports
- + Graphical reports via MS Reporting Services

Interfaces

- + Data import/export via Excel
- + Send Excel import files to SiteTracker by e-mail
- + Data exchange with MS Project

Other

- + Available worldwide
- + Multilingual (switch languages online)
- + Secure (SSL encryption, security guidelines, authorisation concept)
- + Many years of proven success.



Direct – personal – individual

Find out more about SiteTracker in a live or online presentation. Get in touch with us to arrange a date that suits you.

Tip!

For a quick explanation of SiteTracker, watch the video now at www.rollout-software.com

Phone: +49 (0)7544 – 95 1 95-30
e-mail: info@rollout-software.com
Internet: www.rollout-software.com

SiteTracker

Roll-Out Management

Manage rollouts clearly

